

Klemmhalter, Axialbearbeitung

Schwingungsgedämpfter Stahl- und Hartmetall-Rundschaft mit optimierter innerer Kühlmittelzufuhr für Axialbearbeitungen.

Toolholder, Face Grooving Applications

Anti-vibration solid steel and carbide round shank with optimized through coolant for face grooving applications.

Anzugsmoment (Schraube) // Tightening torque (screw)

“ATK6”: 7,0 Nm
“ATMB”: 4,5 Nm

Bitte Hinweise im Anhang beachten // Please read add. notes

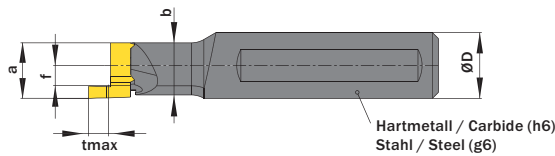
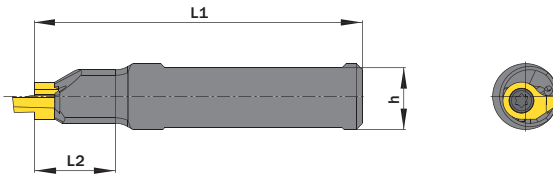
MASTER (Seite/Page 236)



Legende
Legend 238

Scan QR-Code

Oder besuchen Sie // Or Visit
www.simtek.info/cp/807

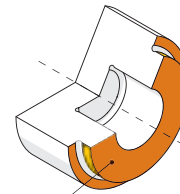


Maße „a“, „f“ und „tmax“ sind abhängig vom verwendeten Schneideinsatz.
Dimensions „a“, „f“ and „tmax“ depend on used carbide inserts.

Abbildung zeigt / Drawing shows: D14.A.0016.20 ST R



Optimierte Kühlung für die Axialbearbeitung.
Optimized through coolant for face grooving applications.



- Hauptsächlich geeignet für diese Flächen
Mainly designed for these surfaces
- Je nach Schneidplatte ebenfalls möglich
Also possible depending on insert type

| ØD | L2 | Artikelnummer Part number | Webcode www.simtek.com/webcode | Stahl Steel | Hartmetall Carbide | b | h | L1 | Schraube Screw | Schraubenschlüssel Screw driver | Connectcode www.simtek.com/ccode |
|---|------|------------------------------|---|----------------|-----------------------|------|------|-------|-------------------|------------------------------------|---|
| mm | mm | | | | | mm | mm | mm | | | |
| ▼ Connectcode = D14.A.L D14.A.R | | | | | | | | | | | |
| 15,875 | 62,0 | D14.A.0.625.60 HM R | A5W1 | - | x | 12,7 | 14,9 | 120,0 | ATMB | T15F | D14.A.L D14.A.R |
| ▼ Connectcode = D14.A.L D14.A.R / D14.A.L D14.A.R | | | | | | | | | | | |
| 15,875 | 42,0 | D14.A.0.625.42 HM R/L | R A4V9 L A4V7 | - | x | 12,7 | 14,9 | 100,0 | ATMB | T15F | R D14.A.L D14.A.R L D14.A.L D14.A.R |
| 15,875 | 5,6 | D14.A.0.625.05 ST R/L | R A5UF L A5UH | x | - | - | 14,9 | 70,0 | ATMB | T15F | R D14.A.L D14.A.R L D14.A.L D14.A.R |
| 15,875 | 20,0 | D14.A.0.625.20 ST R/L | R A4UH L A4UK | x | - | 12,7 | 14,9 | 80,0 | ATMB | T15F | R D14.A.L D14.A.R L D14.A.L D14.A.R |
| ▼ Connectcode = D14.A.R / D14.A.L | | | | | | | | | | | |
| 16,0 | 5,3 | D14.A.0016.05 ST R/L | R AB51 L AJ02 | x | - | - | 15,0 | 70,0 | ATMB | T15F | R D14.A.R L D14.A.L |
| 16,0 | 20,0 | D14.A.0016.20 ST R/L | R AE7Z L AJ7N | x | - | 12,7 | 15,0 | 80,0 | ATMB | T15F | R D14.A.R L D14.A.L |
| 16,0 | 42,0 | D14.A.0016.42 HM R/L | R ABY3 L AKPP | - | x | 12,7 | 15,0 | 100,0 | ATMB | T15F | R D14.A.R L D14.A.L |
| 16,0 | 62,0 | D14.A.0016.60 HM R/L | R AQDY L AQDX | - | x | 12,7 | 15,0 | 120,0 | ATMB | T15F | R D14.A.R L D14.A.L |
| ▼ Connectcode = D18.16.A.R D18.18.A.R / D18.16.A.L D18.18.A.L | | | | | | | | | | | |
| 20,0 | 5,6 | D18.A.0020.05.18 ST R/L | R AT09 L AVS0 | x | - | - | 19,0 | 85,0 | ATK6 | T20T | R D18.16.A.R D18.18.A.R L D18.16.A.L D18.18.A.L |
| 19,05 | 5,6 | D18.A.0.750.05.18 ST R/L | R A5UK L A5UN | x | - | - | 18,0 | 85,0 | ATK6 | T20T | R D18.16.A.R D18.18.A.R L D18.16.A.L D18.18.A.L |

Bestellbeispiel // Order example: D14.A.0016.20 ST R (R = Rechte Ausführung // Right hand version)

Eine Umschlüsselungsliste von Webcode zu Schrauben bzw. Spannmuttern finden Sie auf Seite 766.
A conversion list from webcode to screws as well as standard screw nuts can be found on page 766.