

# Klemmhalter, Innenbearbeitung, Quadratschaft

Quadratischer Schaft für die Innenbearbeitung.

# Toolholder, Internal Applications, Square Shank

Square shank for internal applications.

Anzugsmoment (Schraube) // Tightening torque (screw)

**7,0 Nm**

Bitte Hinweise im Anhang beachten // Please read add. notes

**MASTER (Seite/Page 153)**



**TW**  
**ST**

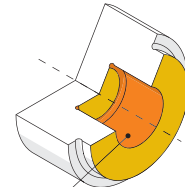
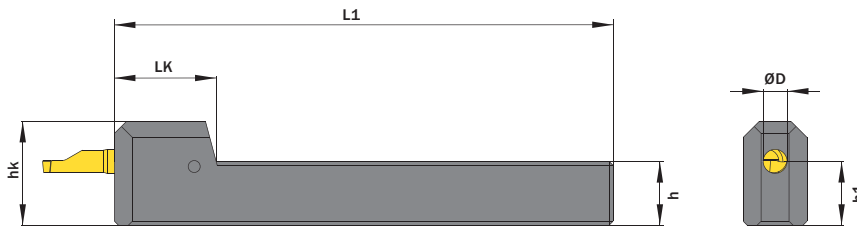
Legende  
Legend

**155**



Scan  
QR-Code

Oder besuchen Sie // Or Visit  
[www.simtek.info/cp/745](http://www.simtek.info/cp/745)



- Hauptsächlich geeignet für diese Flächen  
Mainly designed for these surfaces
- Je nach Schneidplatte ebenfalls möglich  
Also possible depending on insert type

Abbildung zeigt / Drawing shows: A06.1616

ØD	h	b	Artikelnummer Part number	Webcode <a href="http://www.simtek.com/webcode">www.simtek.com/webcode</a>	h1	hk	L1	LK	Schraube Screw	Schraubenschlüssel Screw driver	Connectcode <a href="http://www.simtek.com/code">www.simtek.com/code</a>
mm	mm	mm			mm	mm	mm	mm			
<b>▼ ØD = 4,0 mm</b>											
4,0	12,7	12,7	<b>A04.0.500.S</b>	AJ10	12,7	22,0	100,0	19,0	ATKW	T15F	A04.L A04.R A04CL A04C.R
4,0	15,875	15,875	<b>A04.0.625.S</b>	ACQ9	15,88	25,0	125,0	19,0	ATKW	T15F	A04.L A04.R A04CL A04C.R
4,0	19,05	19,05	<b>A04.0.750.S</b>	AHP1	19,05	28,6	125,0	19,0	ATKW	T15F	A04.L A04.R A04CL A04C.R
4,0	25,4	25,4	<b>A04.1.000.S</b>	AT9S	25,4	34,9	150,0	19,0	ATKW	T15F	A04.L A04.R A04CL A04C.R
4,0	10,0	10,0	<b>A04.1010</b>	ACXN	10,0	19,0	100,0	19,0	ATKW	T15F	A04.L A04.R A04CL A04C.R
4,0	12,0	12,0	<b>A04.1212</b>	AF1Y	12,0	21,0	100,0	19,0	ATKW	T15F	A04.L A04.R A04CL A04C.R
4,0	16,0	16,0	<b>A04.1616</b>	AC69	16,0	25,0	125,0	19,0	ATKW	T15F	A04.L A04.R A04CL A04C.R
4,0	20,0	20,0	<b>A04.2020</b>	AD4F	20,0	29,0	125,0	19,0	ATKW	T15F	A04.L A04.R A04CL A04C.R
4,0	25,0	25,0	<b>A04.2525</b>	ATZG	25,0	34,0	150,0	19,0	ATKW	T15F	A04.L A04.R A04CL A04C.R
<b>▼ ØD = 5,0 mm</b>											
5,0	12,7	12,7	<b>A05.0.500.S</b>	AAPM	12,7	22,2	100,0	25,0	ATKW	T15F	A05.L A05.R
5,0	15,875	15,875	<b>A05.0.625.S</b>	ANNQ	15,88	25,5	125,0	25,0	ATKW	T15F	A05.L A05.R
5,0	19,05	19,05	<b>A05.0.750.S</b>	ANWK	19,05	28,5	125,0	25,0	ATKW	T15F	A05.L A05.R
5,0	25,4	25,4	<b>A05.1.000.S</b>	ATZP	25,4	34,9	150,0	25,0	ATKW	T15F	A05.L A05.R
5,0	10,0	10,0	<b>A05.1010</b>	AMKZ	10,0	19,5	100,0	25,0	ATKW	T15F	A05.L A05.R
5,0	12,0	12,0	<b>A05.1212</b>	ABNX	12,0	21,5	100,0	25,0	ATKW	T15F	A05.L A05.R
5,0	16,0	16,0	<b>A05.1616</b>	AJYG	16,0	25,5	125,0	25,0	ATKW	T15F	A05.L A05.R
5,0	20,0	20,0	<b>A05.2020</b>	AF6C	20,0	29,5	125,0	25,0	ATKW	T15F	A05.L A05.R
5,0	25,0	25,0	<b>A05.2525</b>	ATZH	25,0	34,5	150,0	25,0	ATKW	T15F	A05.L A05.R

Verwandte Werkzeuge finden Sie auch auf der folgenden Seite!  
Related Items can be found on the following page as well!

Fortgesetzte Tabelle  
Continued Table

Bestellbeispiel // Order example: **A04.1212**

Eine Umschlüsselungsliste von **Webcode zu Schrauben bzw. Spannmuttern** finden Sie auf Seite **766**.  
A conversion list from **webcode to screws as well as standard screw nuts** can be found on page **766**.