

Klemmhalter, Innen, Kurzausführung

Einstechdrehen und Längsdrehen innen.

Toolholder, Internal, Short Version

Internal grooving and turning.

Anzugsmoment (Schraube) // Tightening torque (screw)

“ASCD”: 7,0 Nm
 “ATJ8”: 12,0 Nm



TW
ST

R

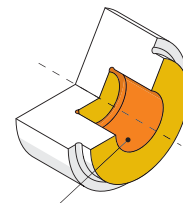
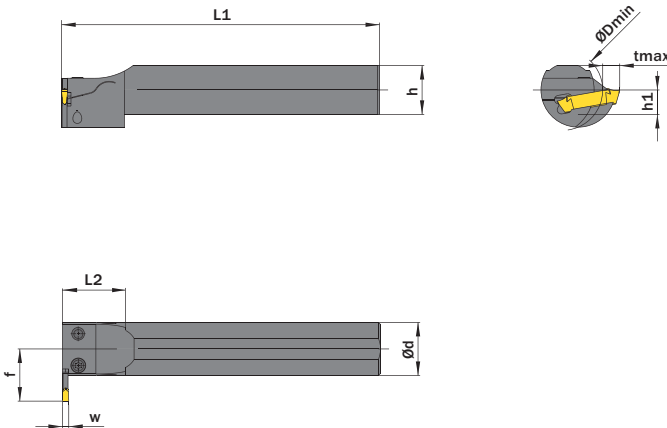
Legende
Legend

327



Scan
QR-Code

Oder besuchen Sie // Or Visit
www.simtek.info/cp/517



- Hauptsächlich geeignet für diese Flächen
Mainly designed for these surfaces
- Je nach Schneidplatte ebenfalls möglich
Also possible depending on insert type

Abbildung zeigt / Drawing shows: G13.0025.03 R

Ød ^{g6} mm	w ≥ mm	w ≤ mm	Artikelnummer Part number	Webcode www.simtek.com/webcode	ØDmin (Min. Bohrung) ØDmin (min. bore)	f mm	h mm	h1 ^{is14} mm	L1 mm	L2 mm	tmax mm	Schraube Screw	Schraubenschlüssel Screw driver	Connectcode www.simtek.com/code
▼ Connectcode = G29.03														
25,0	3,0	4,0	G13.0025.03 R/L	R AGA2 L ABW9	38,0	24,5	23,0	11,5	150,0	30,0	11,0	ASCD	T20T	G29.03
32,0	3,0	4,0	G13.0032.03 R/L	R ADMW L AKKY	38,0	28,0	30,0	15,0	150,0	30,0	11,0	ATJ8	SW6	G29.03
40,0	3,0	4,0	G13.0040.03 R/L	R AFKV L AAF7	50,0	32,0	38,0	19,0	180,0	30,0	11,0	ATJ8	SW6	G29.03
50,0	3,0	4,0	G13.0050.03 R/L	R ABWD L AKHD	60,0	40,5	47,0	23,5	200,0	30,0	15,0	ATJ8	SW6	G29.03
▼ Connectcode = G29.04														
25,0	4,0	5,1	G13.0025.04 R/L	R ACB9 L AM41	38,0	24,5	23,0	11,5	150,0	30,0	11,0	ASCD	T20T	G29.04
32,0	4,0	5,1	G13.0032.04 R/L	R AN4Q L AH0C	38,0	28,0	30,0	15,0	150,0	30,0	11,0	ATJ8	SW6	G29.04
40,0	4,0	5,1	G13.0040.04 R/L	R AMTN L APHN	50,0	32,0	38,0	19,0	180,0	30,0	11,0	ATJ8	SW6	G29.04
50,0	4,0	5,1	G13.0050.04 R/L	R ABWN L AC9W	60,0	40,5	47,0	23,5	200,0	30,0	15,0	ATJ8	SW6	G29.04
▼ Connectcode = G29.06														
32,0	5,2	6,0	G13.0032.06 R/L	R AFEK L AE8Q	38,0	28,0	30,0	15,0	150,0	30,0	11,0	ATJ8	SW6	G29.06
40,0	5,2	6,0	G13.0040.06 R/L	R AHFN L AKXC	50,0	32,0	38,0	19,0	180,0	30,0	11,0	ATJ8	SW6	G29.06
50,0	5,2	6,0	G13.0050.06 R/L	R AD53 L AC5C	60,0	40,5	47,0	23,5	200,0	30,0	15,0	ATJ8	SW6	G29.06

Bestellbeispiel // Order example: **G13.0025.03 R** (R = Rechte Ausführung // Right hand version)

Eine Umschlüsselungsliste von **Webcode zu Schrauben bzw. Spannmuttern** finden Sie auf Seite 766.
 A conversion list from **webcode to screws as well as standard screw nuts** can be found on page 766.

simturn AX
simturn DX
simturn PX
simturn H2
simturn K2
simturn GX
simturn E3
simturn E12
simturn FX
simturn Decolletage
simturn OA
Index